



OFFICER REPORT TO LOCAL COMMITTEE SURREY HEATH

COMMUNITY SAFETY PARTNERSHIP ANNUAL REPORT 2010/11

13 OCTOBER 2011

KEY ISSUE

The report provides an update on the work of the Safer Surrey Heath Partnership during 2010-11 (Community Safety Partnership – CSP) and plans for the coming year. Borough and police partners have also contributed to this report and will attend the Local Committee.

SUMMARY

Surrey Heath is one of the safest boroughs in England, with overall crime levels below the national average. Residents' satisfaction and confidence in local policing are high; 94% of residents are either 'satisfied' or 'very satisfied' with where they live, and 87% are 'very' or 'fairly' confident with local policing. Surrey Heath has the second lowest amount of overall crime compared with the other boroughs in the county.

The Safer Surrey Heath Partnership has achieved many of its objectives in 2010-11 and agreed a range of actions to deliver the objectives in its 2011-12 Partnership Plan. These are set out in the Safer Surrey Heath Partnership Annual report for 2010-11, which can be found in ANNEX 1.

OFFICER RECOMMENDATIONS

The Local Committee (Surrey Heath) is asked to note:

- (i) **the contents of the report, the importance of the contribution of all services towards community safety and the progress made in 2010-11**

INTRODUCTION AND BACKGROUND

1. The Safer Surrey Heath partnership comprises statutory representatives from seven agencies: Surrey Police, Surrey County Council, Surrey Heath Borough Council, the Surrey NHS Trust, Surrey Fire & Rescue Service, Surrey Police Authority and, since April 2010, Surrey & Sussex Probation. In the Crime & Disorder Act 1998 (amended 2006), a local crime and disorder reduction partnership (now known as a Community Safety Partnership) is a statutory requirement with the function of auditing and monitoring local incidences of crime, and working together to devise and deliver an effective strategy to address it.

2. Section 17 of the 1998 Crime and Disorder Act requires local authorities to consider the crime and disorder implications of all their activities and functions, and do all that they reasonably can to prevent and reduce these problems. Surrey County Council services make an active contribution to crime prevention locally, through work with children and young people, Trading Standards, highways, countryside rights of way, and other key services. Public services are expected to have regard to S.17, and to design out crime as far as possible especially when developing new amenities.
3. The work of the Safer Surrey Heath Partnership supports the Safer and Stronger Communities Partnership Board, which takes a strategic overview of Surrey's community safety strategy and is chaired by the Chief Constable.
4. The Police Reform and Social Responsibility Bill, containing proposals for the replacement of Police Authorities with directly elected Police and Crime Commissioners, continues its passage through Parliament. The Bill's progress is subject to considerable discussion between the House of Commons and the House of Lords, and as such the shape of the final Bill has yet to be determined. It is envisaged that the provisions of this legislation, if enacted, would provide the Commissioner with significant control over policing and community safety funding that has previously been devolved to a more local level.

ANALYSIS

5. Surrey Heath is one of the safest boroughs in England. The latest crime figures for Surrey Heath are set out in ANNEX 2, which show that overall there has been a decrease (-1.6%) in total crime. There was a reduction in five out of eight crime areas, these being a 4.1% reduction in violence with injury (to 378 offences), a 50% reduction in robbery (from 20 to 10 offences), a 16.6% reduction in vehicle crime (from 453 to 378 offences), a 24% reduction in dwelling burglary (from 200 to 152 offences), and a 10.5% reduction in criminal damage (from 979 to 876 offences). There have been increases in violence without injury (up by 12.9% to 700 offences), non-dwelling burglary (up by 11% to 322 offences) and drugs offences (up by 52.4% to 224 offences). The large increase in drugs offences can be attributed to Surrey Heath police increasing proactive operations.
6. The Surrey Police website, www.surrey.police.uk, provides comprehensive data at borough and ward level on the latest crime figures and this data is refreshed every month (select Crime maps and statistics on the homepage). The Surrey Heath neighbourhood pages include details of the local policing team and how to contact them, together with information about current priorities and concerns. Details of neighbourhood panel meetings and a map of the Surrey Heath neighbourhoods can also be found on the website.

7. Residents can report crime by calling 999 (serious and urgent matters) or 101 (less urgent calls). Surrey Police can be contacted on 0845 125 222 for non-emergency reports. If they wish to report anti-social behaviour, residents can call their neighbourhood police officer to describe the problem, or visit www.safersurreyheath.info to complete a form online. This information is then sent directly to the responsible officer to address.

Safer Surrey Heath Partnership Annual Report for 2010-11

8. The full annual report of the Safer Surrey Heath Partnership for 2010-11 can be found in ANNEX 1. This sets out the key aims of the partnership for 2010-11 (page 4), achievements of the Community Incident Action Group (CIAG) and Joint Action Group (JAG) (pages 4/5), and sets out partnership successes under each of the four priority areas of fear of crime, public place disorder, priority crimes and substance misuse (pages 5-9). As well as the statistics featured in paragraph 5 above, highlights from the report include:
 - 87% of people 'fairly' / 'very' confident in local policing
 - 101% detection rate for drug offences
 - 42% reduction in road collisions including death or serious injury from 12 in the 1st qtr of 2010-11 to 7 in the 1st qtr of 2011-12
 - Camberley Street Angels update
9. Page 9 sets out the areas that the partnership focused on in 2010-11; areas for focus in 2011-12 are currently being agreed.
10. The Partnership Plan priorities for 2011-12 can be found at www.safersurreyheath.info

CONSULTATIONS

11. Surrey Police conduct regular neighbourhood panel meetings at local level with members of the public, as part of the neighbourhoods agenda, together with a quarterly Policing Forum. Details of forthcoming Panel meetings can be found at www.surrey.police.uk, and contact details for neighbourhood officers are laid out in ANNEX 3.

FINANCIAL AND VALUE FOR MONEY IMPLICATIONS

12. Surrey County Council has made available £14,500 per borough/district for use in conjunction with the Community Safety Partnerships.
13. The Local Committee agreed in June 2011 to transfer the community safety funding (£2,500) to the Community Safety Partnership. The Committee also noted that the funding of £12,000, which is ring fenced for the use of the crime and disorder partnerships subject to domestic abuse outreach being provided, would be paid to the Surrey Community Safety Unit, who are now managing and administering the funding to the Domestic Abuse Outreach providers in Surrey Heath.

EQUALITIES AND DIVERSITY IMPLICATIONS

14. Community safety funding continues to contribute to a domestic abuse outreach service provided under contract by Surrey Women's Aid. Practical and emotional support is provided to people, referred by the police and other local agencies, who have experienced physical and/or emotional domestic abuse.
15. Steps are taken to ensure that Neighbourhood Panel meetings are accessible for all. Surrey Police has a minicom number: 01483 539999.
16. Incidents of hate crime are monitored carefully by Surrey Police.

COMMUNITY SAFETY IMPLICATIONS

17. The community safety implications are implicit in the report.

CONCLUSION

18. Members are asked to endorse the contribution of all services towards community safety and note progress made.

LEAD OFFICER: Michelle Collins, Team Leader (West)

TELEPHONE NUMBER: 01483 518093

E-MAIL: michelle.collins@surreycc.gov.uk

LEAD CONTACT OFFICERS: Simon Griffin, Community Partnership & Committee Officer (01276 800269);
Elizabeth Hatton, Surrey Heath Borough Council (01276 707263);
Neighbourhood Inspector James Norbury, Surrey Police (0845 125 2222).

E-MAIL: simon.griffin@surreycc.gov.uk

ANNEX 1: Safer Surrey Heath Partnership Annual Report 2010-11

ANNEX 2: Latest recorded crime and confidence statistics

ANNEX 3: Neighbourhood police officer contact details

SURREY HEATH RECORDED CRIME
April 2010 to March 2011

OFFENCE	FYtD	NO's Change	% Change	% Detected
Total Notifiable Crime	4334	-71	-1.6%	28.5%
Violence with Injury	378	-16	-4.1%	33.1%
Robbery	10	-10	-50%	30%
Violence without injury	700	80	12.9%	46%
Vehicle crime	378	-75	-16.6%	6.3%
Burglary Dwelling	152	-48	-24%	21.1%
Burglary Non- Dwelling	322	32	11%	6.8%
Criminal Damage	876	-103	-10.5	11.9%
Drugs	224	77	52.4%	101.3%

**Policing Plan confidence target measure
Very & Fairly Confident (%)**

The target for the Force for 2010-13 is to maintain levels above 80%.

For 2010-11, confidence was measured at 87.4% in Surrey Heath, as compared to 88.2% countywide. This represents an improvement on 2009-10, which saw confidence in Surrey Heath measured at 86.8%.

A target of making 76% of ASB victims satisfied with the service provided is now in place. The following table shows performance in Surrey Heath and other boroughs.

	Year End 2009/10	2010/11 January (new)	2010/11 February (new)	2010/11 March (new)	Year End 2010/11
Force	73.1	79.7	78.7	81.8	76.7
	(521)	(438)	(389)	(391)	(3198)
Elmbridge	71.4	71.4	80.0	87.8	75.6
	(63)	(56)	(50)	(41)	(394)
Epsom & Ewell	88.9	66.7	92.6	88.0	78.4
	(27)	(24)	(27)	(25)	(190)
Guildford	73.7	81.8	76.7	85.5	73.1
	(57)	(55)	(43)	(55)	(424)
Mole Valley	82.9	92.3	94.4	74.1	79.7
	(41)	(26)	(18)	(27)	(192)
Reigate & Banstead	63.9	82.4	80.4	79.2	78.2
	(72)	(51)	(56)	(48)	(337)
Runnymede	84.9	76.5	61.5	78.9	74.8
	(53)	(34)	(26)	(19)	(226)
Spelthorne	65.7	76.5	82.9	84.9	78.7
	(67)	(51)	(41)	(53)	(352)
Surrey Heath	55.2	86.8	63.6	81.8	78.7
	(29)	(38)	(33)	(33)	(267)
Tandridge	82.9	66.7	71.0	80.0	71.4
	(35)	(27)	(31)	(30)	(196)
Waverley	74.2	89.5	81.5	70.0	76.9
	(31)	(38)	(27)	(20)	(268)
Woking	71.7	84.2	83.8	80.0	78.5
	(46)	(38)	(37)	(40)	(312)

Surrey Heath Neighbourhood Officers

Bagshot & Windlesham

PC Jason Pill

Chobham, Bisley

PC Anna Whiteside

Camberley Town

PC Gary Chennells

Frimley

PC Laura Madgwick-Smith

Heatherside & Parkside

PC Corinna Last

Lightwater & West End

PC Alison Worger

Mytchett, Deepcut & Frimley Green

PC Andrew Riley

Old Dean

PC Debbie Reece

St Pauls

PC Samir Lama-Tamang

St Michaels & Watchetts

PC Nathalie Pattison

Neighbourhood Sergeants

PS Sandra Carlier

PS Joan Castell

PS Chris Mallett

PS Alison Richardson

To contact Neighbourhood Officers please use the following generic number and email address: Tel: 0845 125 2222

Camberley Town, St Pauls, St Michaels, Old Dean
wsnt_sh_north@surrey.pnn.police.uk or 01483 639880

Frimley, Heatherside, Mytchett/Deepcut/Frimley Green
wsnt_sh_south@surrey.pnn.police.uk or 01483 630152

Lightwater/West End, Bagshot/Windlesham, Chobham/Bisley
wsnt_sh_villages@surrey.pnn.police.uk or 01483 639881

Working together to reduce crime
and the fear of crime



ANNUAL REPORT

2010-11

Report by: Jo Hardy Business and Community Development Officer, Surrey Heath Borough Council

Email: joanna.hardy@surreyheath.gov.uk

CONTENTS	PAGE
1. INTRODUCTION	3
1.2 Executive summary	
1.3 Report highlights	
2. RECORDED CRIME STATISTICS 2010/11	4
3. PARTNERSHIP ACTION PLAN 2010/11	
4. COMMUNITY INCIDENT ACTION GROUP (CIAG)	4
5. JOINT ACTION GROUP (JAG)	5
6. PRIORITY 1: REDUCE FEAR OF CRIME	5
6.1 Driver behaviour (speeding and parking)	
6.2 Misconceptions about crime and ASB	
6.3 Shared responsibility for community safety	
7. PRIORITY 2: REDUCE PUBLIC PLACE DISORDER	7
7.1 Secondary fires	
7.2 Alcohol-related disorder	
8. PRIORITY 3: REDUCE PRIORITY CRIMES	8
8.1 Domestic abuse	
8.2 Domestic burglary	
9. PRIORITY 4: SUBSTANCE MISUSE	9
9.1 Alcohol education and awareness	
9.2 Illegal alcohol supply	
9.3 Alcohol education and awareness	
10. HEATHERSIDE YOUTH FACILITY PROJECT	9
11. PARTNERSHIP ACTION PLAN 2010/11	9
12. COMMUNICATIONS	10
13. ABOUT THE SAFER SURREY HEATH PARTNERSHIP	10

1. INTRODUCTION

Surrey Heath is one of the safest boroughs in England, with overall crime levels below the national average.

Correspondingly, residents' satisfaction with their local area is high - 94% in 2010 of respondents are either satisfied or very satisfied with the area in which they live, compared to 92% in 2007 (Community Safety Survey – Fear of Crime). Confidence in local policing within Surrey Heath is also high, with the number of residents being 'very' and 'fairly' confident with local policing rising from 86% in 2009/10 to 87 per cent in 2010/11 (the target for Surrey Police is 80%).

The Safer Surrey Heath Partnership (SSHP) is committed to making Surrey Heath even safer - a safer place in which to live, work and visit. The Partners are:

- Surrey Heath Borough Council (SHBC)
- Surrey County Council (SCC)
- Surrey Fire and Rescue Service (SFRS)
- Surrey Police (SP)
- Surrey Police Authority (SPA)
- Surrey Primary Care Trust (PCT)
- Surrey and Sussex Probation Trust

This Annual Report rounds up the key community safety activities undertaken by partners during the year. It also reviews the Partnership's performance in achieving the objectives set out in its 2010/11 PAP.

1.2 EXECUTIVE SUMMARY

Throughout 2010/11, frontline officers from the partner agencies continued to work with representatives from associated organisations, including the voluntary sector, and with the community, to maintain and enhance the borough's reputation as one of the safest places in the country to live, work and visit. Partnership working was mainly achieved through the Partnership's operational arms – the Community Incident Action Group (CIAG) and Joint Action Group (JAG) which meet every six weeks throughout the year.

In Autumn/Winter 2011 the Partnership will publish its annual Partnership Action Plan (PAP) following its 2010/11 strategic assessment. The PAP outlines the Partnership's key priorities for the year, and serves as a live working document to ensure key objectives and actions are delivered. The PAP is updated and reviewed on a monthly basis by the Partnership Officers Group (POG), made up of Partnership representatives.

In the year to April 2011, the Partnership contributed funds towards many community safety initiatives and projects, either directly or through funds allocated to JAG. Major community safety projects funded by the Partnership in 2010/11 were the Camberley Together Against Crime (CTAC), the Camberley Street Angels schemes and Heatherside Community Space.

1.3 REPORT HIGHLIGHTS

- 87% of people 'fairly'/'very' confident in local policing
- 101% detection rate for drugs offences
- 24% reduction in domestic burglary
- 21% per cent increase in road deaths/serious injury (from 29 in 2009/10 to 35 in 2010/11)
- 42% reduction in road collisions including death or serious injury from 12 in the 1st qtr of 2010/11 to 7 in the 1st qtr of 2011/12
- Camberley Street Angels update
- Completion of the Heatherside Community Space project

2. RECORDED CRIME STATISTICS 2010/11

- Surrey Heath saw an overall crime decrease of 1.6 per cent - from 4,405 total notifiable crimes during 2009/10 to 4,334 in 2010/11. Violence without injury and burglary non-dwelling are areas of crime where there have been increases in 2010/11 and require further work. Drugs offences increased by 52.4% to 224 offences this is as a direct result of Surrey Heath police increasing proactive operations.

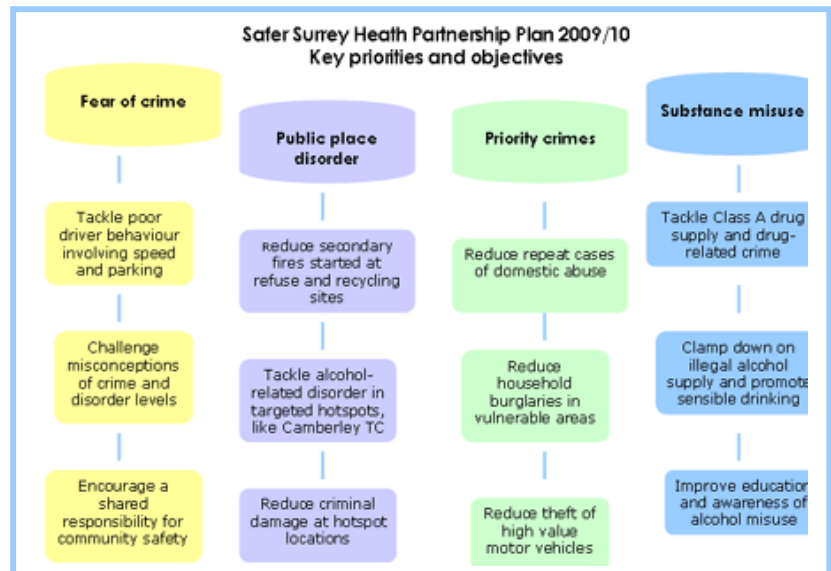
There was a reduction in five out of the eight crime areas:

- Violence with injury down by 4.1% to 378 offences
- Robbery down by 50% from 20 to 10 offences
- Violence without injury up by 12.9 per cent to 700 offences
- Vehicle crime down by 16.6% from 453 to 378 offences
- Burglary dwelling: down by 24% from 200 to 152 offences
- Burglary non-dwelling increased by 11% to 322 offences
- Criminal damage down by 10.5% from 979 to 876 offences
- Drugs offences: increased by 52.4% to 224 offences

3. PARTNERSHIP ACTION PLAN (PAP) 2010/11

Each year, the Partnership assesses the level of crime and disorder, including anti-social behaviour (ASB) that has been reported. Known as an annual strategic assessment, this takes into account information provided by all partners, and supporting organisations such as housing associations and outreach providers.

As well as giving the Partnership a detailed picture about actual levels of crime and disorder in the borough, the strategic assessment provides information about residents' concerns. It provides the Partnership with intelligence and evidence of the priorities and problems that will inform effective and responsive delivery structures via the Partnership Action Plan (PAP).



In April 2010, a summary of the 2010/11 PAP was published on the Partnership's website (as above), while a detailed 'live' PAP was continually reviewed and updated throughout the year by the Partnership Officers Group (POG). The PAP outlines: objectives, actions, timings, lead partners, communications activities, and performance.

4. COMMUNITY INCIDENT ACTION GROUP (CIAG)

The Community Incident Action Group (CIAG) is a multi-agency problem-solving group, which is accountable to the Partnership. It seeks to divert, assist or control individuals or families in the community who have been identified as having an adverse impact on the community. Members of the group deal with problems like truancy, ASB and prolific offenders, seeking preventative and long-term solutions to reducing crime and disorder in the borough.

Members of CIAG meet every six weeks to agree actions to reduce the negative impact that problem individuals and families have on the wider community. Throughout the year, Partnership agencies continued to provide interventions and support for the family unit. All

individual cases that are nominated are addressed appropriately using the relevant partner agencies, with the need for early diversionary activities and intervention. Surrey County Council (SCC) Youth Development Service (YDS) and Surrey Fire and Rescue Service (SFRS) are actively involved in targeted interventions, with initiatives such as the Army Outreach Project and Youth Engagement Scheme (YES).

A key issue for CIAG during 2009/10 was the nuisance behaviour of a group of young people from Frimley; four members of the group were served interim ASB orders (ASBOs). As of April 2010, the group were behaving in accordance with the terms of their orders. Surrey YDS has been supporting this group by providing diversionary activities in the form of a new Monday Night Project.

As at April 2011, there were six open CIAG cases involving young people (aged 17 and under), and six open adult cases.

5. JOINT ACTION GROUP (JAG)

Like CIAG, the Joint Action Group (JAG) is a multi-agency problem-solving group accountable to the Partnership. The difference is that JAG seeks to address problems in specific *locations* in the community, as opposed to *individuals*. These could include nightclubs, shopping parades or recreation grounds. The police can use JAG to discuss potential dispersal orders in problem areas to deal with ASB.

Using the expertise that exists within the group, JAG members decide priorities, agree action plans, allocate resources and ensure there is a co-ordinated response to issues highlighted at six-weekly JAG meetings. Examples of issues dealt with by JAG include: residential burglary; town centres (including street drinkers, town centre disorder, etc); substance misuse; domestic abuse; ASB; and public reassurance. The Surrey Heath JAG is now one of the first in Surrey to utilise A&E data from local hospitals (in this case Frimley Park Hospital) to target interventions to reduce alcohol-related assault.

Key issues nominated by JAG officers during 2010/11 included:

- Youth disorder in Townside Park – joint working with the Parks Department have resulted in more protective netting, an Environmental Visual Audit and increased patrols.
- Fires in the Borough – this issue is on-going and will look at the long-term education and prevention of the problem.
- Victoria Court – drugs warrants were executed as part of Operation Kingsville earlier in the year and this also highlighted environmental issues relating to the flats and the nature of the occupants. A group is being set up to look at these issues.

6. PRIORITY 1: REDUCE FEAR OF CRIME

Reducing fear of crime remained a priority for the Partnership during 2010/11, specifically:

- Tackling driver behaviour involving speeding and bad parking
- Challenging misconceptions about crime and disorder levels
- Encouraging a shared responsibility for community safety

6.1 Driver behaviour

The number of people killed or seriously injured (KSIs) on Surrey Heath increased from 29 in 2009/10 to 35 in 2010/11. There was one fatalities on Surrey Heath's roads in 2010/11, compared to two in 2009/10.

The award-winning **Safe Drive Stay Alive** stage show aims to educate young drivers and their passengers about the consequences of driving dangerously. Over 12,000 school and college students see the show every November.

A number of **Casualty Reduction Days** were held in Camberley Community Speedwatch area, and partners supported the SCC Drive Smart campaign locally with publicity and leaflet distribution. Events linked to Drive Smart included a Park Smart event at the Grove School, Frimley, the campaign focuses on anti social parking, and is specifically targeting parking outside schools. At the REED day on May 11 2011, a total of 100 vehicles were stopped 36 for speeding, 3 for mobile phones and 25 drivers for not wearing a seatbelt.

The resident-run **Community Speed Watch** scheme continued to contribute to road safety awareness in Surrey Heath during the year, with support from Surrey Police. There are currently nine speed watches in the Borough; 4 in Camberley, 2 in Mytchett, 1 in Bisle, 2 in Chobham and 1 in Lightwater.



For older pupils, a series of **Theatre in Education** workshops were held in Surrey Heath schools in March 2011. Organised by the SCC Safer Travel Team, again as part of the Drive Smart campaign, the workshops involved Year 7 and Year 12 students taking part in tailor-made drama performances to provide them with strategies to keep themselves safe and to influence the actions of other road users or drivers.

6.2 Shared responsibility for community safety

Partners supported many local community events during the year, taking the opportunity to remind residents and businesses about the part they can play in helping to keep their neighbourhoods safe.

Around 12,000 residents visited the Surrey Heath show, held at Frimley Lodge park in April 2011. Neighbourhood Watch supported the event with its crime prevention trailer and SFRS and Surrey Police also attended. An **Old Dean Fun Day** was held in September 2010 and 2011, bringing together partners and residents, and was well attended.

Community Safety Survey 2010

The Community Safety Survey was completed in September 2010 a total of 1,219 surveys were sent out including a residents and a young people's survey. 94.2% of respondents were either satisfied or very satisfied with the neighbourhood in which they lived which is slightly up on 2007 results.

7. PRIORITY 2: REDUCE PUBLIC PLACE DISORDER

Reducing public place disorder remained a key focus for Partnership activities during 2010/11, specifically:

- Reducing secondary fires at waste sites and recycling centres
- Reducing alcohol-related social disorder
- Reducing criminal damage at hotspot locations

7.1 Secondary fires

In the twelve months to September 2011 there were 31 primary fires. This figure, however, must be viewed against what historically within the borough is an incident type which is very

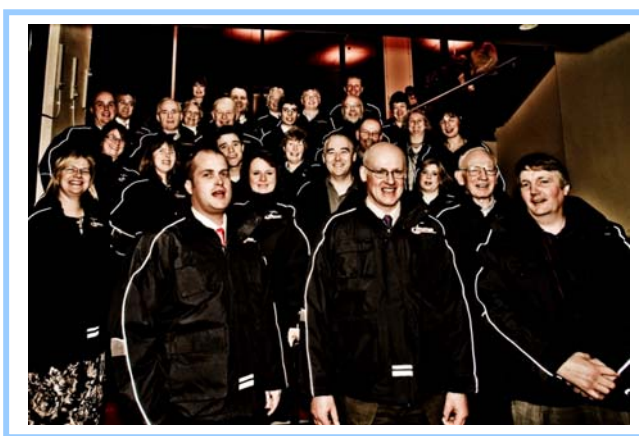
prone to seasonal fluctuations. Two posters were produced in spring 2011 as a reminder to the public how vulnerable the countryside is to heath fires and to report small fires.

SFRS continued to work on the **YES scheme** which involves young people, aged 14-16, spending a week at a fire station, where they experience hands-on training (in a controlled environment) about the essentials of being a fire fighter. The scheme is aimed at young people who are considered at risk of becoming involved in ASB and/or crime. Candidates are nominated by multi-agency groups, including CIAG. From June 2010 to March 2011 - 43 young people from Surrey Heath have been referred to the scheme and a total of 16 have graduated.

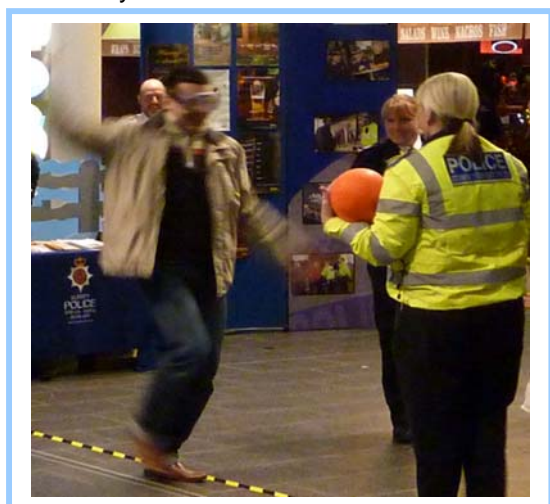
The **Easter bus project** in 2011 was aimed at bringing the local community together over the Easter break and to reduce anti-social behaviour. The Easter bus is run by a range of agencies, is targeted at different locations in the borough where advice and support is required.

7.2 Alcohol-related social disorder

A major project that continued to be funded by the Partnership during 2010/11 was the **Camberley Street Angels** scheme. Set up and managed by Churches Together in Camberley, the scheme involves groups of volunteers out and about in Camberley town centre on Fridays nights offering a calming presence and practical support to people in need. Street Angels work with the support of other agencies working in the town centre at night and have connecting links by radio with each other, the team base, CCTV and the police.



The **Alcohol campaign** was a week long campaign held in October 2010 supporting the Surrey Drug and Alcohol team (DAAT) to increase awareness of alcohol usage with the theme 'Adult and Childhood'. The Last Orders theatre production and education workshop which highlighted issues around alcohol abuse aimed at year 9 students was held at the three secondary schools.



The **Safer Christmas campaign 2010** focused on **promoting Christmas safety** while out and about. The **Campaign** was aired on Eagle Radio during December along with an on-line campaign.

Surrey Police's Neighbourhood Policing Team increased patrols in Camberley Town Centre during peak times in December. Surrey Fire and Rescue Service carried out safety inspections at shops, pubs and premises in the town centre. Surrey Trading Standards carried out an alcohol test purchasing operation in December 2010, which resulted in three town centre premises out of 12 tested failing and being fined £80. One-off Partnership funding

enabled the **Taxi Marshals** to be back in action on Christmas Eve and New Year's Eve, on Camberley High Street, to ensure residents got home safely.

Camberley Together Against Crime (CTAC) initiative, with funding from the Partnership, is aimed at tackling crime and ASB in the town centre. The security initiative, incorporating a radio network, information sharing and improved communication between town centre users,

is led by the Camberley Town Centre Partnership and supported by the Safer Surrey Heath Partnership. As at April 2010, CTAC had 47 members. The project has been a huge success and is now self-sustaining. The detection rates for members are 70% compared to less than 60% for non-members.

8. PRIORITY 3: REDUCE PRIORITY CRIMES

The priority crime objectives featured in the PAP 2010/11 were:

- Reduce repeat domestic abuse cases
- Reduce domestic burglary in vulnerable areas
- Reduce theft of high value vehicles

8.1 Domestic abuse

The Partnership continued its annual grant to fund a domestic abuse **outreach worker** at Surrey Women's Aid (SWA) to help victims of domestic abuse in Surrey Heath. The outreach helpline is available for all victims of domestic abuse, 24 hours a day, seven days a week. Referrals to the outreach service reduced from 335 in 2009/10 to 241 in 2010/11.

The number of residents who took up the Partnership-funded **Sanctuary Scheme**, which allows victims of domestic abuse to remain safely in their own homes by providing additional security, fell from 11 in 2009/10 to 5 households in 2010/11.

As it does every year, the Partnership supported the annual **Surrey Domestic Abuse (DA) Awareness Week** in October 2010. Partners chose to focus on organisations for its 2010 campaign and awareness sessions awareness of domestic abuse among their peers.

The event also supported a hard-hitting Home Office campaign to raise awareness of **teen abuse** posters displayed and literature shared with schools and youth workers.

The partnership also promoted Domestic Abuse workshops called **'The power of Love'** aimed at engaging with young people. The workshops took place at Kings International College and Carwarden House Community School. Aimed at Year 10 students (15 and 16 year olds) the workshops run by the Solomon Theatre Company, brings to life a Domestic Abuse scenario incorporating cyber crime.

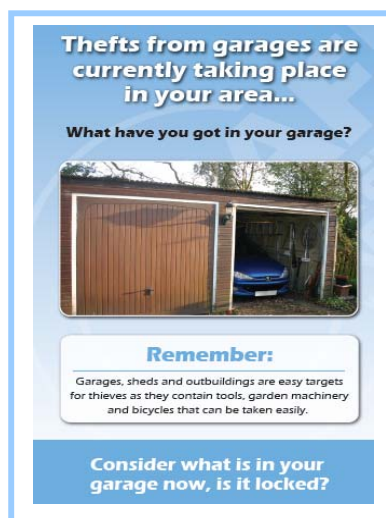
8.2 Domestic burglary

In 2010/11 domestic burglary was down by 24% from 200 to 152 offences. The localised anti burglary campaign happened over a fortnight in November 2010.

Non-dwelling burglary increased by 11% to 322 offences in 2010/11. A non-dwelling burglary postcard was produced with preventative advice on thefts from sheds, outbuilding and garages. A Crime stoppers poster was produced with the Safer Surrey heath logo for rural locations.

A **catalytic converter** theft postcard was created in Spring 2011 with prevent advice for business which was distributed at hotspots.

The **Junior Citizens Scheme** in Surrey Heath was held in February 2011, at Camberley Fire Station. The scheme organised for the first time by the Surrey Heath Confederation of Schools and the SSHP, aimed to equip the youngsters with knowledge that will help them to broaden their own personal safety skills.



9. PRIORITY 4: REDUCE SUBSTANCE MISUSE

Tackling substance misuse remained a key focus for Partnership activities during 2010/11 specifically:

- Tackling Class A drug supply and drug-related ASB
- Reducing illegal alcohol supply and promoting safe, sensible drinking
- Improving education and awareness of alcohol misuse

9.1 Class A Drugs Supply

The Safer Surrey Heath Partnership worked with agencies, including the Surrey Drug and Alcohol Action Team (DAAT), to support 'Drugs Fortnight' in September/October 2010. The Drugs Awareness fortnight including press releases, the drugs bus visiting Camberley, Heatherside and the Old Dean and multi-agency staff drug awareness training.

10. HEATHERSIDE YOUTH FACILITY PROJECT

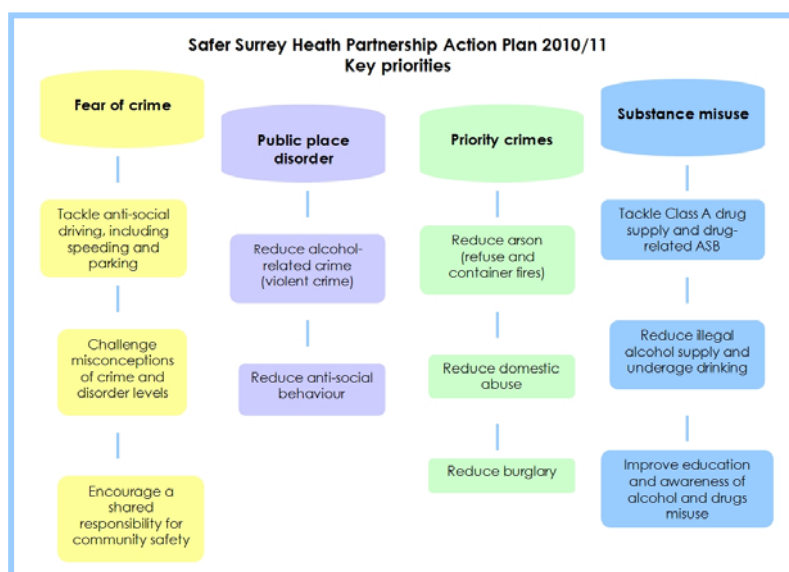
In July 2011 the members of the Surrey Heath Partnership were given a guided tour of the community space on Heatherside Recreation Ground. The space, incorporating an outdoor gym, skate park, seated area and a brand new children's play area was completed in the spring and was developed in consultation with the Heatherside community. The partnership has also provided finance to the council to pay for maintenance of the space which will be looked after by the parks and countryside team.

11. PARTNERSHIP PLAN 2010/11

The Partnership's 2009/10 strategic assessment was completed in March 2010 and clarified partners' community safety priorities for 2010/11.

The Partnership was advised to focus on success areas to ensure that improvement was sustained, and to focus its activities during 2010/11 on the following:

- Non-dwelling burglaries
- Violence against the person
- Alcohol-related crime
- Arson
- Traffic-related issues
- Perceptions of crime and disorder
- Road traffic casualties



A summary of these priorities (as above) can be found on the Partnership's website.

12. COMMUNICATIONS

During 2010/11, work was undertaken officers to devise and deliver communications campaigns, publicity and promotions to raise awareness of crime and disorder reduction work being undertaken in Surrey Heath, and to help reduce fear of crime.

Community safety articles were published in all four issues of the borough magazine, *Heathscene*, and the Neighbourhood Watch quarterly newsletter, *HeathWatch*, continued to be an important communications tool for community safety messages. A quarterly internal

e-newsletter, *Community Safety E-Update*, continued to keep partners up-to-date with community safety developments and projects.

Eagle Radio

The four Crime and Disorder Reduction Partnerships (CDRPs) of Surrey West's division (Surrey Heath, Guildford, Woking and Waverley) are continuing to work together on the 12 month county wide safety communications campaign in conjunction with Eagle Radio.

Website Update

The Safer Surrey Heath partnership web site home page and left hand navigation menu has been redesigned for better presentation and easier use.

13. ABOUT THE SAFER SURREY HEATH PARTNERSHIP

Under the Crime and Disorder Act 1998, agencies in England and Wales have a statutory duty to form a Community Safety Partnership (CSP) to tackle key community safety issues. The agencies required to take part are the borough and county councils, primary care trust, fire authority, police authority and probation. CSPs are required to review the levels and patterns of crime and disorder in the area, and develop and implement strategies to tackle these problems.

In Surrey Heath, the CSP is known as the Safer Surrey Heath Partnership and is made up of Surrey Heath Borough Council, Surrey County Council, Surrey Fire and Rescue Service (a department of Surrey County Council), Surrey Police, Surrey PCT, Surrey Police Authority, and Surrey and Sussex Probation Trust.

All partners work together to provide reassurance, raise awareness of community safety issues and implement a Partnership Action Plan to reduce crime, and fear of crime. The Partnership works closely with safer neighbourhood policing teams, housing associations, the criminal justice board, as well as voluntary organisations such as Neighbourhood Watch, to maintain the borough's high safety record.

Find out more at www.safersurreyheath.info